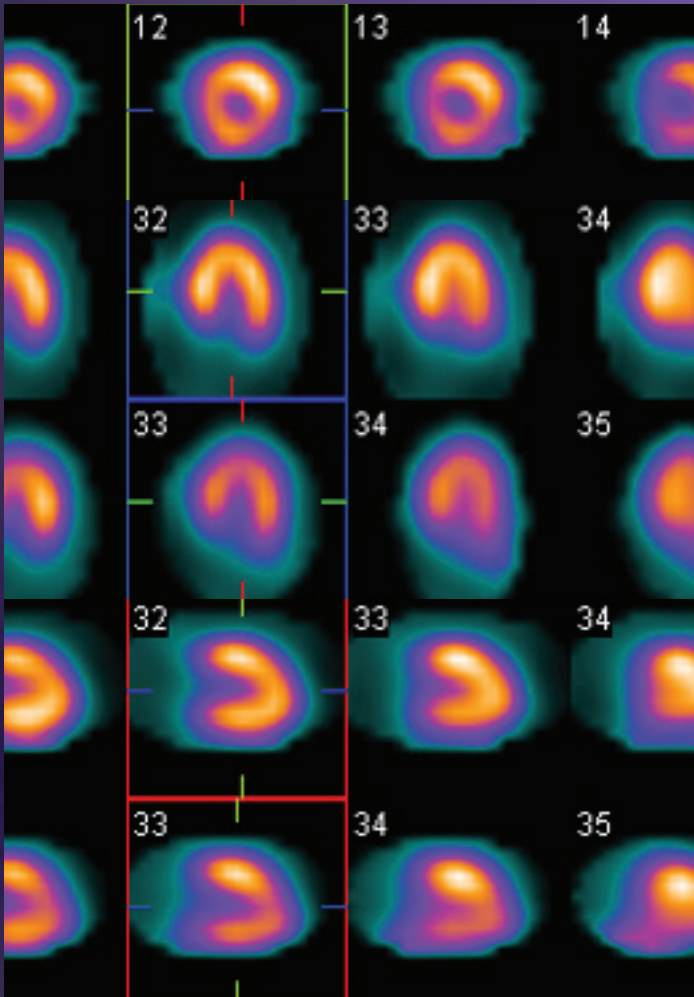


## MOLECULAR IMAGING

# Myocardial Perfusion Scan

A myocardial perfusion scan evaluates coronary artery disease by assessing the blood flow to the heart muscle both at rest and at stress to look for major blockages



### Scan details

- Images are taken of the patient's heart at rest and stress states.
- A small amount of radioactive tracer is injected through the cannula. The rest phase images of the heart are then taken.
- Experienced Doctors and medical staff conduct the stress test using either a treadmill or using pharmacological medications. A radioactive tracer is administered when the patient reaches the optimal increased heart rate for "stress".
- Once the stress test is complete, images of the myocardium in its stress phase are taken.
- Rest and stress images are combined to assess the blood flow.

### GP medicare criteria

- Referral must meet a certain criteria to be bulk billed through medicare.
- Patient must exhibit a symptom of Cardiac Ischaemia such as SOBOE, constricting chest pain or angina  
**AND**  
a failed stress echo or is unable to exercise  
**OR**  
a pre-op patient must be symptomatic and have one of the following; IHD, heart failure, stroke/TIA, renal dysfunction or IDDM.
- Medicare Bulk-Billing criteria for GP – 61329 (once every 24 months).

### Why refer for a mibi scan?

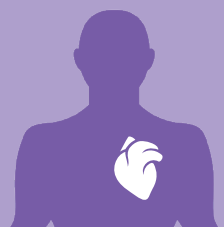
- A mibi scan provides physiological information and a semi-quantitative assessment of the perfusion to the heart, while an angiogram provides the anatomical assessment of the coronary arteries.

### Contraindications

- Cardiac medications will need to be withheld on the morning of the test, with the exception of Asasantin (which if suitable needs to be ceased for 7 days with aspirin as a replacement).
- Patient is required to be caffeine free for 24hrs.
- Our specialised staff will always call and go through preparation with the patient before the test.

### Duration of scan

- Approx 3 hrs



Download all PRP's  
Nuclear Medicine  
Brochures



# Nuclear Medicine

A safe and non-invasive imaging modality, nuclear medicine scans provide early detection of a range of pathologies from heart disease, bone and joint disorders, to functionality of organs – as well as skeletal imaging for cancer.

**Early detection is crucial for faster and most appropriate treatment, allowing a better overall prognosis.**

**BULK BILLED**

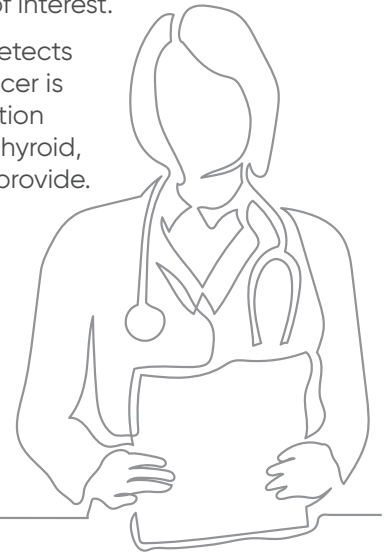
based on MBS referral criteria

Nuclear medicine is a specialised, highly sensitive medical imaging technique that uses a small amount of a radioactive tracer for imaging. The tracers are designed either for whole body studies or to target specific organs, providing functional images of the organ of interest.

Images are produced by a gamma camera that detects gamma rays emitted from the patient after the tracer is administered. These images demonstrate the function of different organs (including kidney, gall bladder, thyroid, lymph nodes) that other imaging modalities can't provide.

Improving technology means doses are always optimised and minimised, delivering procedures that are safe and non-invasive – and are suitable for patients with low renal function.

Generally speaking, nuclear medicine injections will not cause any side effects.



## Why Choose PRP

### An established reputation for excellence

**PRP nuclear medicine physicians have specialty knowledge in all facets of nuclear medicine.**

This unique depth of subspecialty expertise allows for a valuable second opinion and expert consultation, ensuring an excellent level of care and accuracy for every investigation performed.

We utilise the latest technology and expertise to provide high-quality imaging with precise and detailed reporting to support diagnosis through to long-term health management plans.

Additionally, PRP offers urgent consultations via our DrLine service, to support diagnosis and health care management plans.

### We understand that time matters

PRP offers an easy referral process through our website, including fast reporting to reduce anxiety for patients and allow prompt action where required.

Our goal is to ensure all patients can access timely, world-class radiology services with all nuclear medicine scans bulk billed – based on MBS referral criteria.

We also offer free, local parking with patient drop-off facilities with disabled access at our practices.

Contact your MLO via email to find out more about how PRP Diagnostic Imaging can benefit your patients.  
[mlos@prpimaging.com.au](mailto:mlos@prpimaging.com.au)

